



TDM 200/250
STIFFENER
BRACKET
INSTALLATION

TDN 07103-00198 June 19 2009

CORPORATE HEADQUARTERS:

21405 B Street
Long Beach, MS 39560
Phone: (228) 575-3188
Fax: (228) 575-3200

COPYRIGHT NOTICE

© 2008 Triton. All Rights Reserved. TRITON logo is a registered trademark of Triton Systems of Delaware.

Document Updates

June 19 2009 Original

TABLE OF CONTENTS

INTRODUCTION **PURPOSE, SCOPE, APPLICATION, PARTS & TOOLS.....PG 2**
SECTION 1 **TDM STIFFENER BRACKET INSTALLATIONPG 3**

PURPOSE

This guide covers the steps for installing a support bracket in the TDM. It helps support the upper double detect assembly area in the TDM 200/250 and resolves the problem of high rejects from Cassette A.

SCOPE

This procedure applies to all VERIFIED TRITON TRAINED service personnel involved in the process of maintaining or converting Triton ATMs.

APPLICATION

This conversion kit applies to all models of Triton ATMs using the TDM 200/250 dispenser mechanism. Contact Triton Technical Support for further verification.

REQUIRED PARTS AND TOOLS

TOOLS REQUIRED	Torx driver T20 / #2 or smaller, thin shaft Philips screw driver, no longer than 6 inches
KIT 06100-08139	TDM stiffener bracket kit

PART NUMBER	DESCRIPTION	QTY
02054-00176	Screw self tapping philips head	2
03110-07080	TDM Stiffener	1
07103-00198	TDM Stiffener Bracket installation manual	1

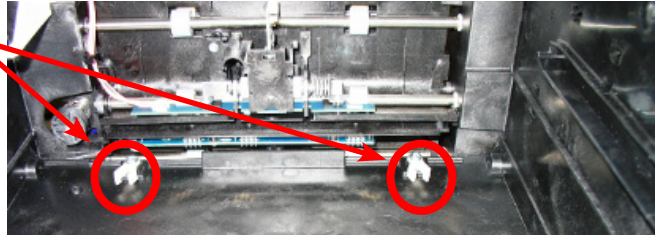
NOTE:

Care must be taken in the handling of the bracket, detents and screws. DO NOT overtighten the screws, or damage to the bracket or detents will occur.

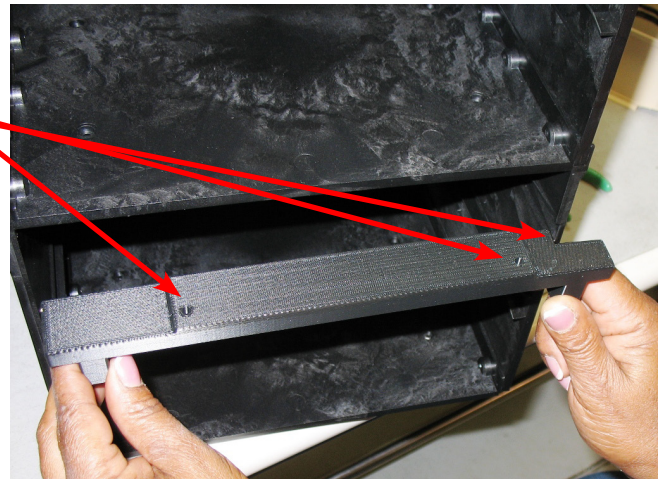
SECTION 1

INSTALLATION PROCEDURE

- Follow the appropriate procedure to shut down your particular ATM and remove power.
- Remove the reject and note cassettes.
- In the upper cassette area, remove the 2 (two) screws and detent clips with the T20 torx driver. Retain the detents, discard the screws.



Note the position of the mounting holes and right side indentation in this view.



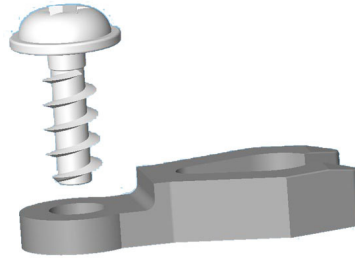
- Position the stiffener bracket in the rear of the lower cassette area as shown. This bracket is blue for clarification. Yours will be black.

Note the indentation on the right side of the bracket



TDM STIFFENER BRACKET

- Using the new, longer screws, reinstall the detents as shown. It may take a little adjustment of the bracket to ensure engagement of the screws into the bracket. **DO NOT** over tighten the screws or you risk damage to the bracket or detents. The detents should not move. Note the relationship of the screw and detent. Ensure the detents face straight forward.



- Replace the cassettes and return the ATM to service.