



SCDU Packer Plate Installation Instructions

07103-00228 May 16, 2013

Corporate Headquarters:

21405 B St.

Long Beach, MS 39560

Phone: (800) 259-6672

Fax: (228) 868-9445

Copyright Notice

© 2013 Triton. All Rights Reserved. TRITON logo is a registered trademark of Triton Systems of Delaware LLC.

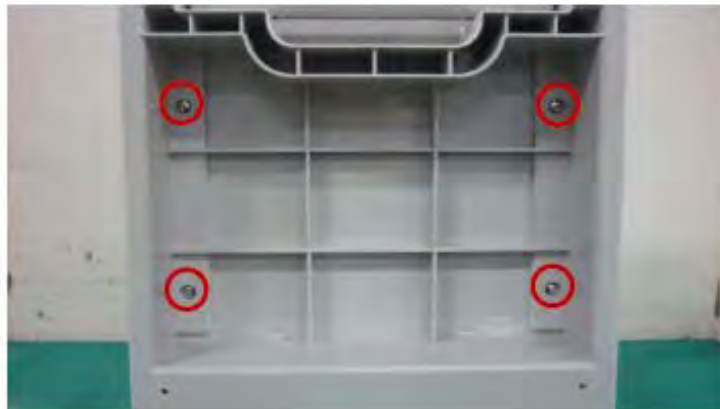
DOCUMENT UPDATES

May 16, 2013 Original

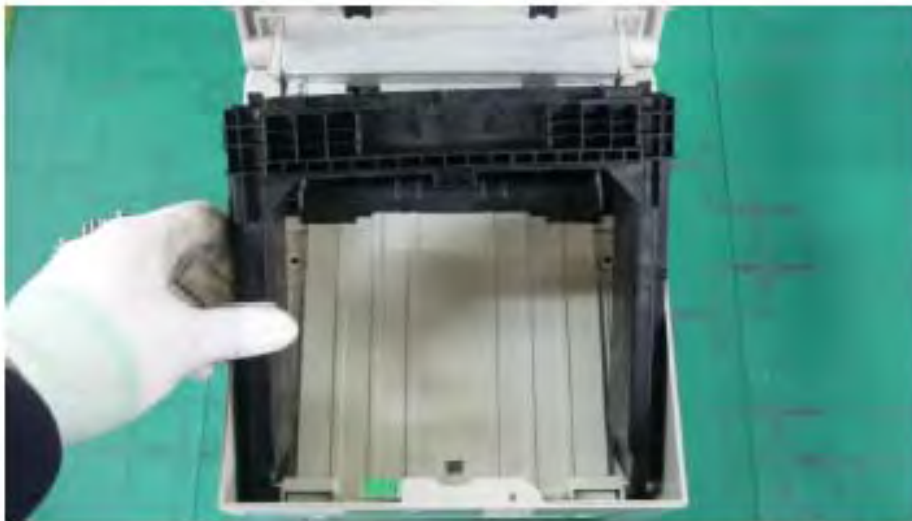
SCDU Packer Plate Installation Instructions

Installation of the SCDU packer plate requires: a #2 Phillips head screwdriver (not supplied).

Step 1: Remove the 10 screws shown on the left, right and bottom sides of the cassette. (Note: the bottom four screws are different from the six used on the sides.)



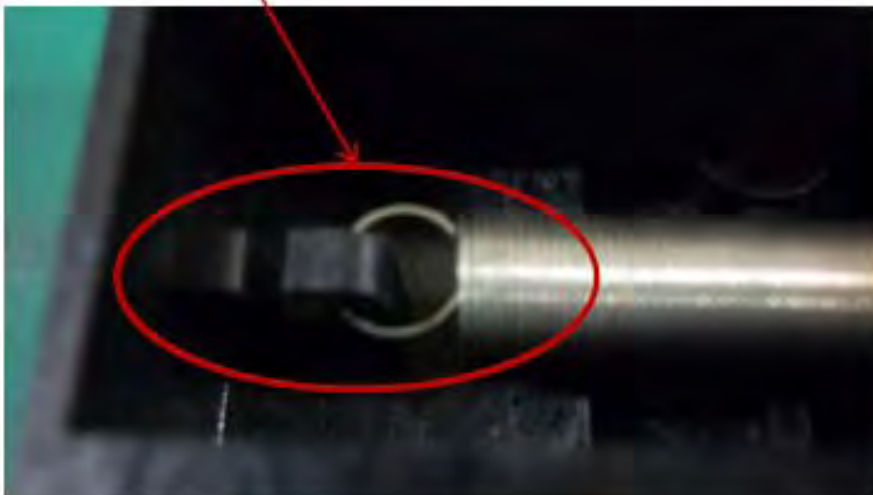
Step 2: Remove the rail/packer plate assembly from the cassette.



Step 3: Pull the packer plate back and twist to remove from the side rail as shown.



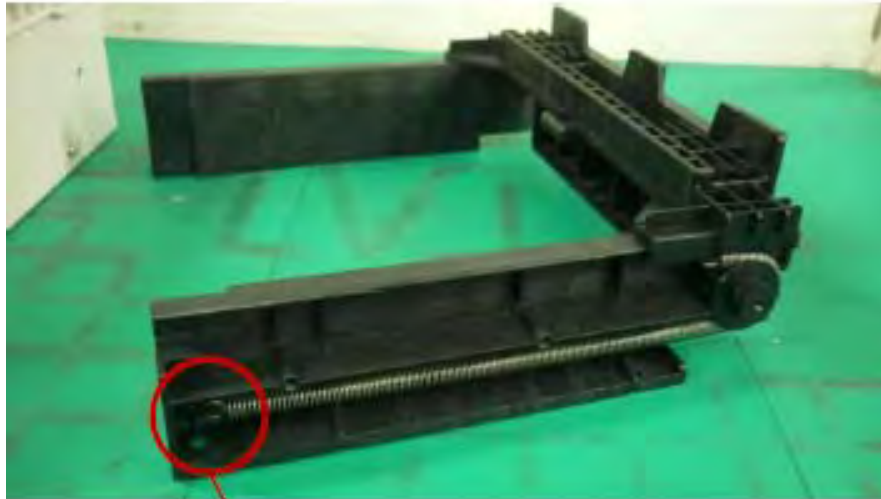
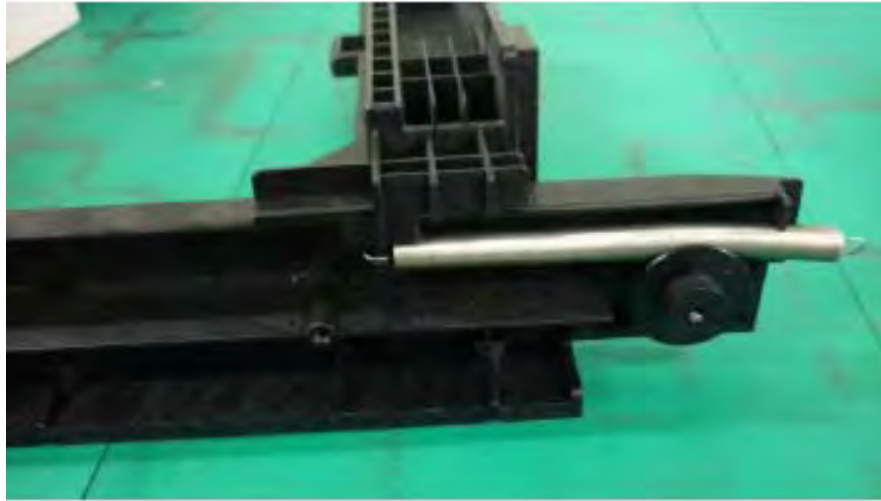
Step 4: Remove the spring from the packer plate and rail.



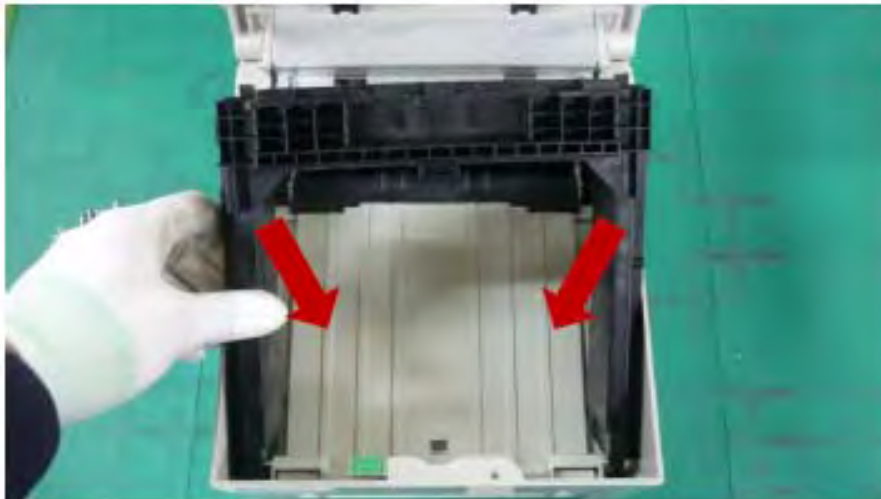
Step 5: Install the spring on the new packer plate.



Step 6: Slide the packer plate onto the rail. Stretch the spring over the roller and refasten to the rail. Repeat the process for the opposite rail.



Step 7: Install the rail and packer plate assembly back into the cassette.



Step 8: Push the rail/packer plate assembly forward as far as it will go as shown. A gap exists on the rear side of the rail when properly installed.



Step 9: Install the ten screws removed in Step 1. Make certain to use the proper four screws on the bottom of the cassette.

